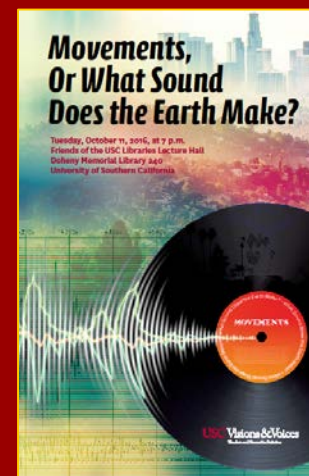
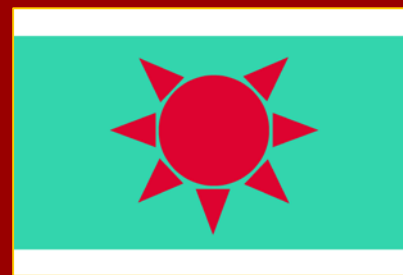
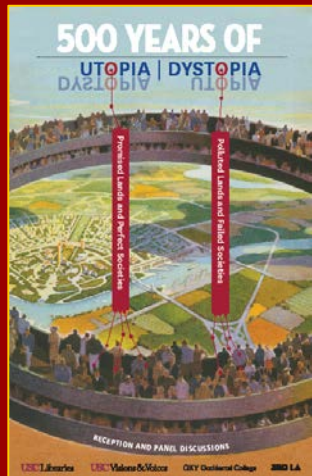


# Polymathy, Utopia, and Data Art In Support of USC's Strategic Vision

PRRLA 2016 Melbourne



Catherine Quinlan  
Dean of the USC Libraries

Hugh McHarg  
Associate Dean for Programs and Planning

# Outline

PRRLA theme: From vision to reality—libraries as strategic assets for research, teaching, and learning

Particularly relevant sub-themes:

Collaborations related to improving teaching and learning

External initiatives aimed at helping institutions achieve strategic visions

1. Strategy and organization

Catherine Quinlan

2. Programs and impact

Hugh McHarg

# Timing and Context

Confluence of events:

- New provost with new priorities
  - Access and opportunity
  - The value of a USC education
  - Becoming truly global
  - Intractable challenges and transdisciplinary solutions

# Timing and Context

Confluence of events :

- Administrative review of the libraries
- Association of College and Research Libraries

## Framework for Information Literacy

- Authority is constructed and contextual
- Information creation as a process
- Information has value
- Research as inquiry
- Scholarship as conversation
- Searching as strategic exploration

# Strategic Planning

## 2011 values

- Service Excellence
- Integrity
- Scholarly Inquiry
- Innovation
- Effective Communication
- Social Responsibility
- Library as Place

## 2016 values

- **Inquiry.** We make possible consequential discoveries, creative pursuits, and access to knowledge as a matter of intellectual and social responsibility.
- **Ingenuity.** Through experimentation and informed risk-taking, we make tangible advancements and solve substantive problems.
- **Integrity.** We act with professionalism, accountability, transparency, and respect for diversity of peoples, ideas, and ways of knowing.
- **Inclusiveness.** We work with kindness, cultural awareness, and a collaborative impulse to develop increasingly meaningful sites of reflection and engagement with and for our community.

# Strategic Planning

## 2016 thematic goals

- Exceptional, integrated, and consequential engagement with intellectual and creative communities
- Enterprising, focused, and inspiring leadership on campus, locally, regionally, and globally
- Sustainable, meaningful, and focused capacity for individual and organizational achievement

# USC Libraries Center for Advanced Study

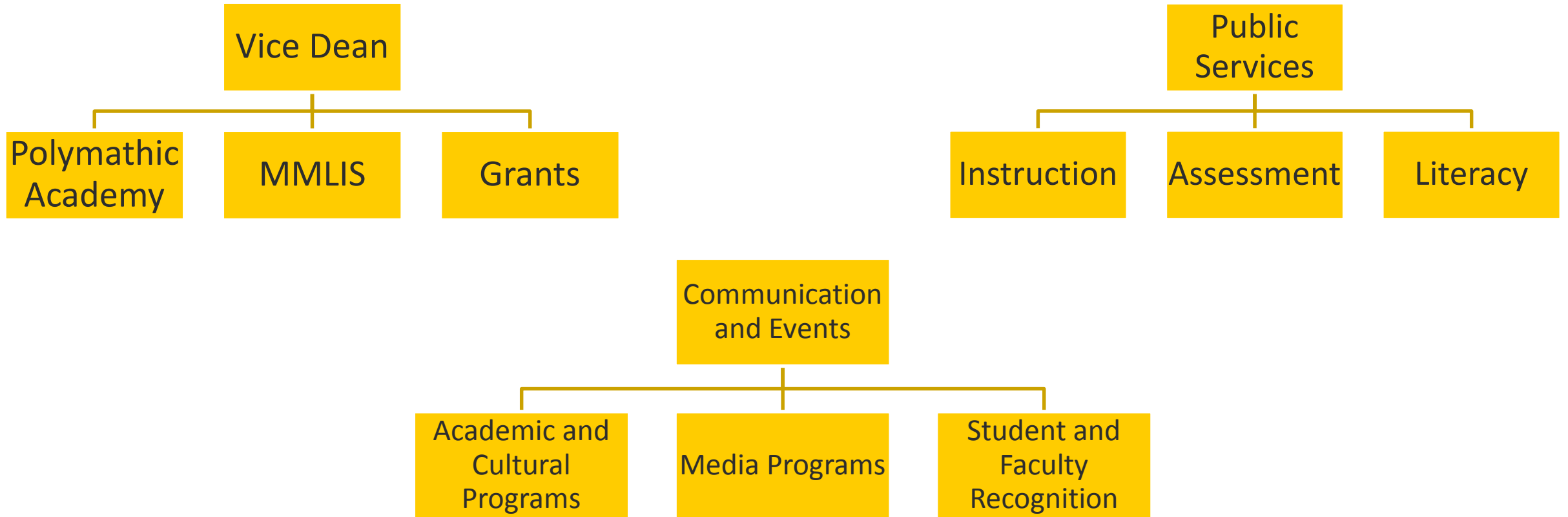
- The history and culture of Los Angeles, California, and the American West
- Film, music, and popular culture, particularly motion picture and television heritage
- Holocaust, genocide studies, and exile studies
- LGBTQ studies
- East Asian history and culture, and its influence in North America

# Selected Goals of the Reorganization

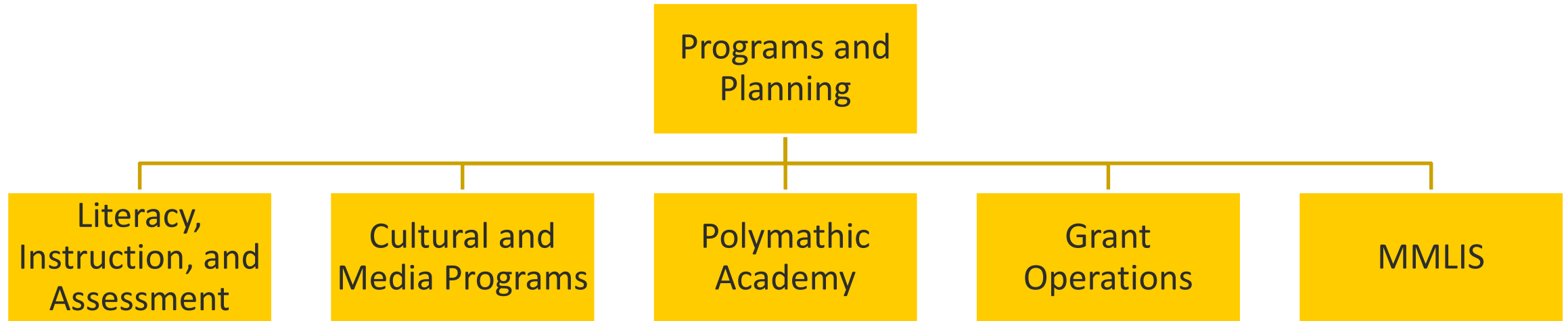
- Unify operations with organization-wide impact in a single department
- Integrate instruction and information literacy principles throughout library programs
- Apply current thinking on multiple literacies and assessment strategies
- More deeply integrate library instruction into curricular programs
- Better support the provost's priorities



# Before



# After



# Programming as Unifying Platform

- Provost's priorities—access and opportunity
  - Freshman, first-generation college attendees, academic achievement recognition programs
- Unique contribution of the library
  - Specialists in literacy and instructional design; academic and public programs; media programs
- Demonstrable, promotable, and scalable
  - Reproducible in the schools; contributes to high-profile programs as well as classroom work

# Provost's Priorities: Access and Opportunity

- First-generation university students: USC Bovard Scholars and the libraries

We prepare our scholars to:



*Gain admission* to top-tier universities



*Navigate the complex* admissions and financial aid process



*Explore potential careers* and ignite professional passions



*Connect* occupational goals to academic pursuits



*Feel at home on a college campus* through a three-week, immersive residential experience on USC's campus



*Learn test-taking strategies* and boost their entrance exam scores



*Understand tools and resources available* on a college campus that support success.



*Determine which college* is the best fit

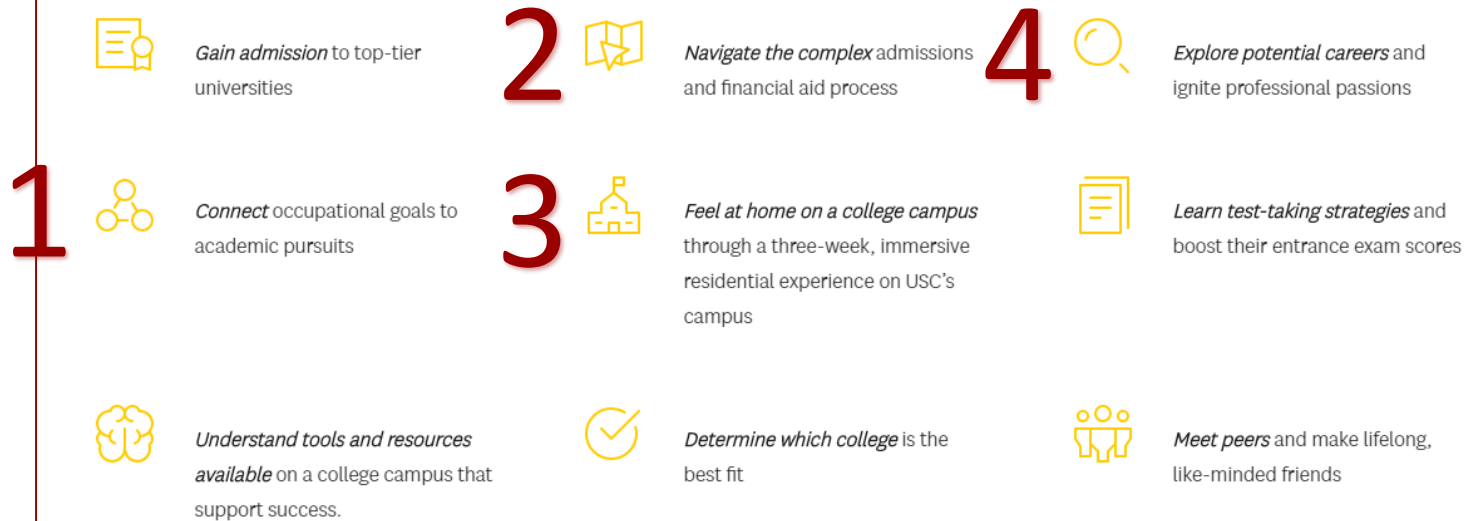


*Meet peers* and make lifelong, like-minded friends

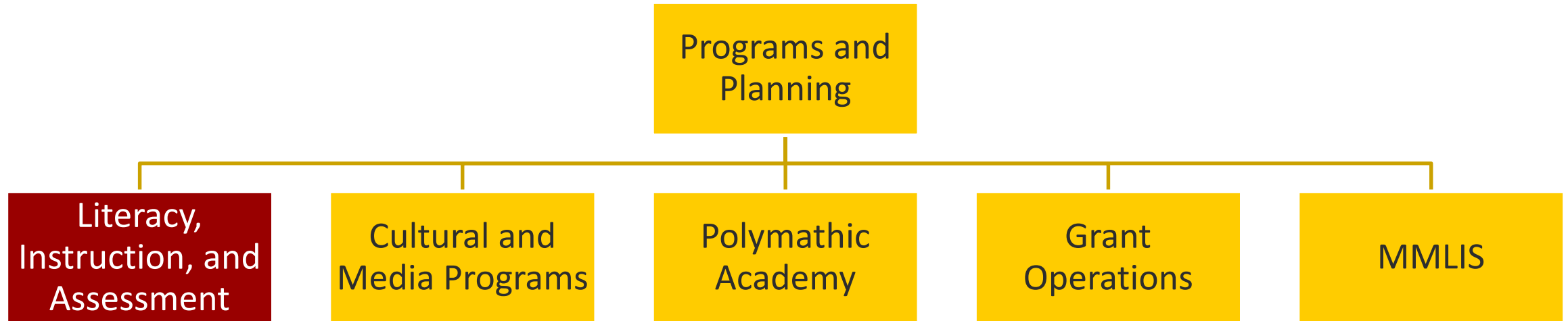
# Provost's Priorities: Access and Opportunity

- First-generation university students: USC Bovard Scholars and the libraries

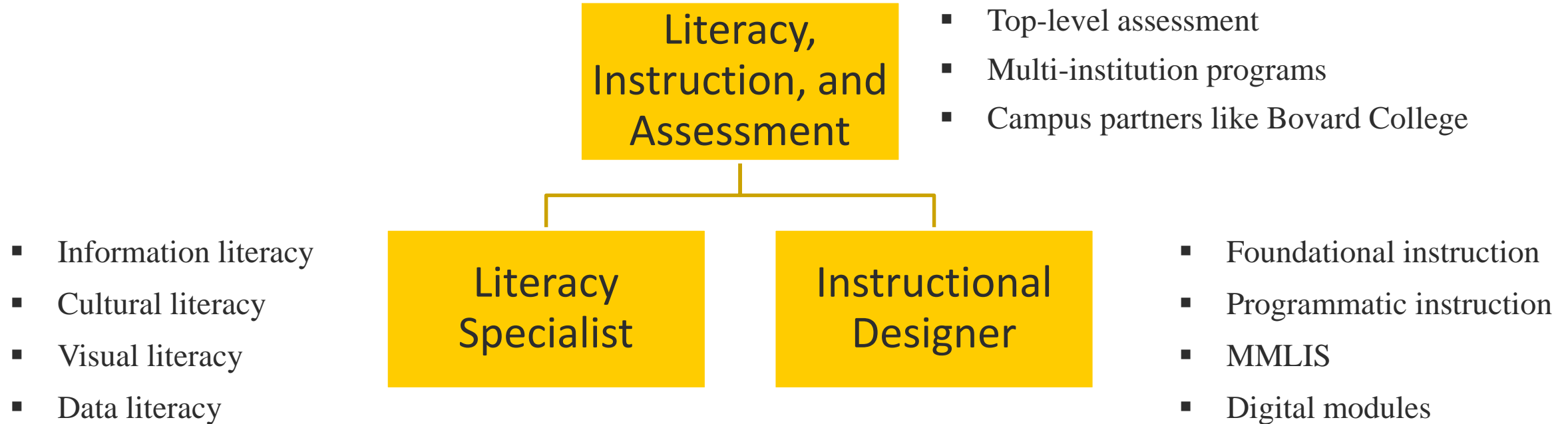
We prepare our scholars to:



# Unique Contribution of the Library



# Unique Contribution of the Library



# Unique Contribution of the Library

- General education curriculum modules
  - Humanistic inquiry, social analysis, citizenship in a diverse world
- Grants to faculty in support of collaborative assignment and syllabus design
- Assessment attached to literacy outcomes and ACRL framework—not just numbers of students
- Addresses a faculty-identified need: large percentage say students need more help determining information authority



# Provost's Priorities: Access and Opportunity

- Freshmen: 500 Years of *Utopia*



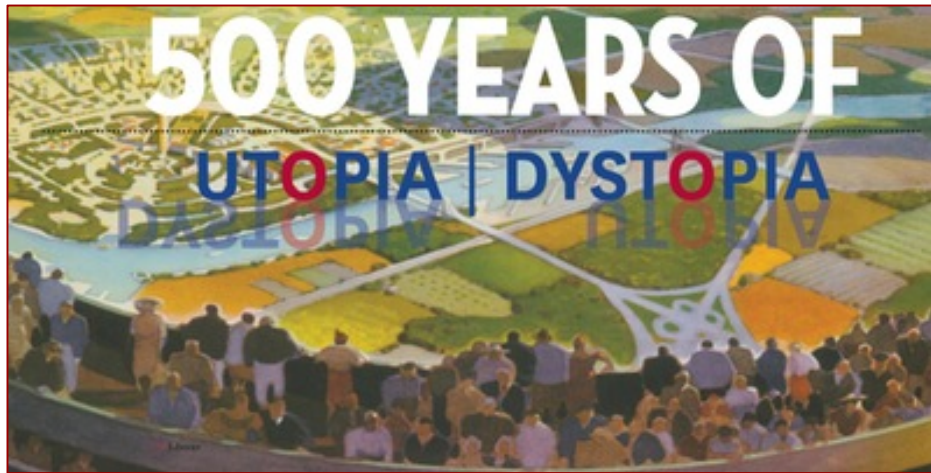
# Provost's Priorities: Access and Opportunity

- Freshmen: 500 Years of *Utopia*



# Unique Contribution of the Library

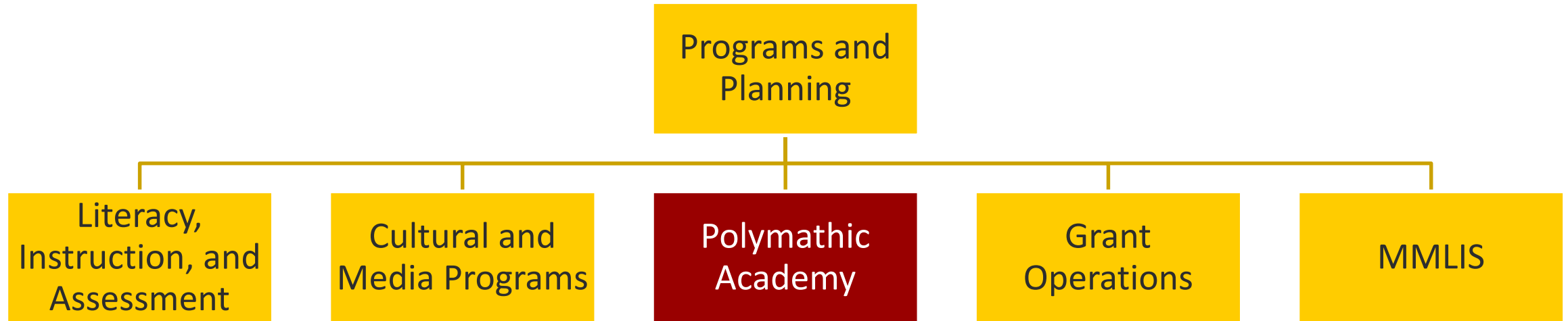
- Informs academic and public programming
- Utopia—exhibition documents student work and links to our collections



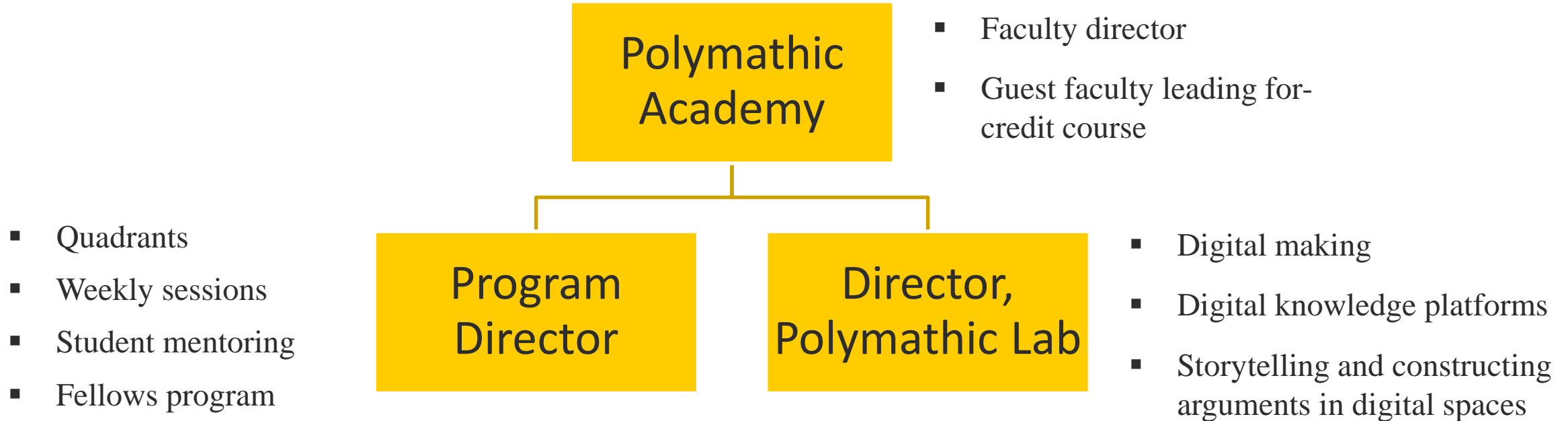
- Evolution of utopia as place, idea, and practice
- Perspectives of governance, design, and creative representation
- Grant-funded programs



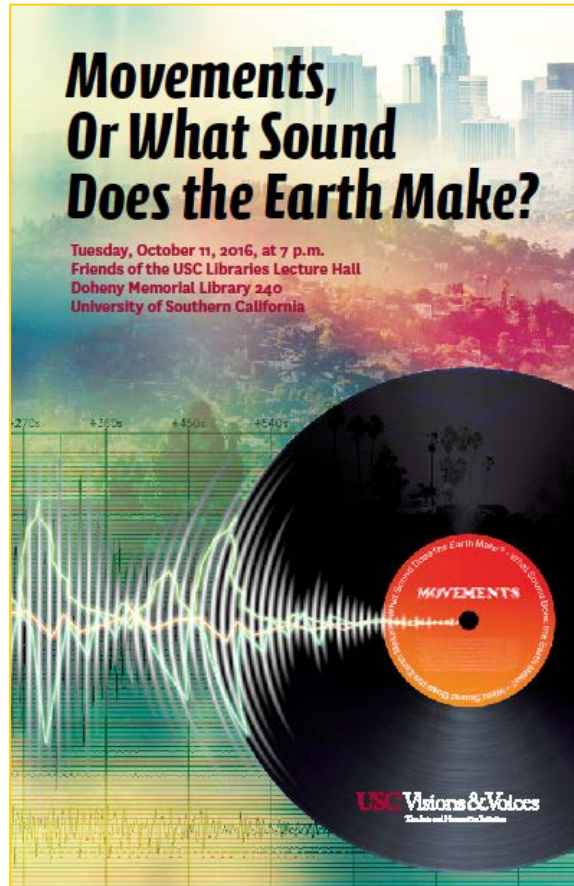
# Harman Academy for Polymathic Study



# Harman Academy for Polymathic Study



# Data + Art: What Sound Does the Earth Make?



- An experiment in sonifying data
- USC music and communication faculty
- USC geophysicists
- United States Geological Survey scientists
- <https://earthquake.usgs.gov/learn/music/>

# Questions